

Breaking the Silos and Building Synergies through Community Led Monitoring- A Community Based Approach to Improve Comprehensive HIV Service Delivery in India

Hauzel, K., Timble, T., Dr. Prasad, R., Dr. Rajan, S., Dr. Singh, B., Madan, I., Dr. Kumar, P., Dr. Mishra, J K., Jha, R K., Dr. Gabhane, L., Kumar, A., Dr. Thakur, G.

Background:

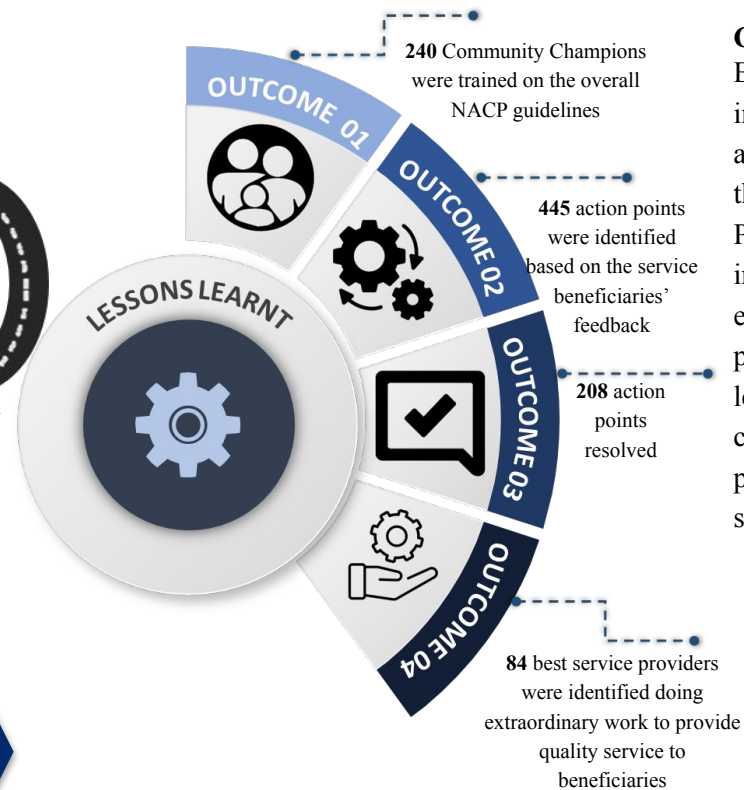
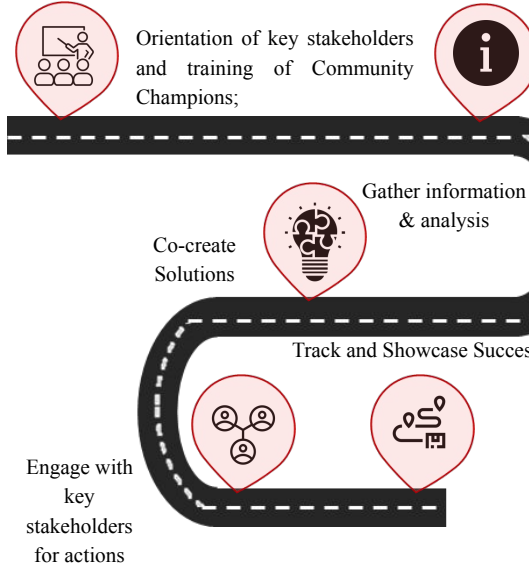
Community-led monitoring (CLM) is a technique initiated by networks of Key Populations, PLHIV, where they gather quantitative and qualitative data about HIV services. CLM's focus is on getting inputs from recipients of HIV services in a routine and systematic manner so that this information can be translated into targeted action and change. The objectives are to enable and empower the larger community to assess, monitor and demand quality services through CLM, to improve access, availability, quality and utilization of HIV services by amplifying enablers & barriers and co-solutioning and to instill accountability in the health system towards better service provisioning.

Description:

CLM was piloted in three, high HIV burden states from May 2020 to September 2022.



One round of CLM comprises 5 Stages



Conclusion:

Based on the learnings of the pilot initiatives, CLM is designed to accelerate and support the efforts of the National AIDS and STD Control Programme Phase-V in institutionalizing the community engagement and meaningful participation at the most granular level. CLM demonstrates that community monitoring can be productive, collaborative, and solutions oriented.

Based on the learnings of the pilot initiatives, CLM is designed to accelerate and support the efforts of the National AIDS and STD Control Programme Phase-V in institutionalizing the community engagement and meaningful participation at the most granular level. CLM demonstrates that community monitoring can be productive, collaborative, and solutions oriented.