



# Strengthening Health and Human Rights for People Living with HIV and Key Populations in Myanmar :

The Community Feedback Mechanism (2022–2024), by Puu Paung Swann Saung Myanmar

**OAE01 – Advancing Equity in the HIV Response: Key Populations, Human Rights, and Quality Intervention**



 **IAS 2025**

Presented by: : Khin Khin Win

(Puu Paung Swann Saung Myanmar – PPSSM)

13 – 17 July • Kigali, Rwanda

[ias2025.org](http://ias2025.org)





IAS 2025



# Summary

## What is your main question?

*How can a community-led system like the Community Feedback Mechanism (CFM) improve access to health, justice, and social support for people living with HIV and key populations in Myanmar?*

## What did you find?

*82% of reported issues were socially related; 82% of all valid cases were resolved. CFM engaged 449 users across six townships, with strong user satisfaction.*

## Why is it important?

*The CFM empowers affected communities to report rights violations, improves service access, and supports rights-based, people-centered HIV responses—especially critical in fragile and under-resourced settings.*



IAS 2025



# Today's Roadmap

## What's Next

- Scaling and the way forward



## Key Insights & Impact

- What the data tells us



## What is CFM?

- The Community Feedback Mechanism



## Myanmar's HIV Landscape

- HIV trends and challenges



# What Is the Community Feedback Mechanism (CFM)?



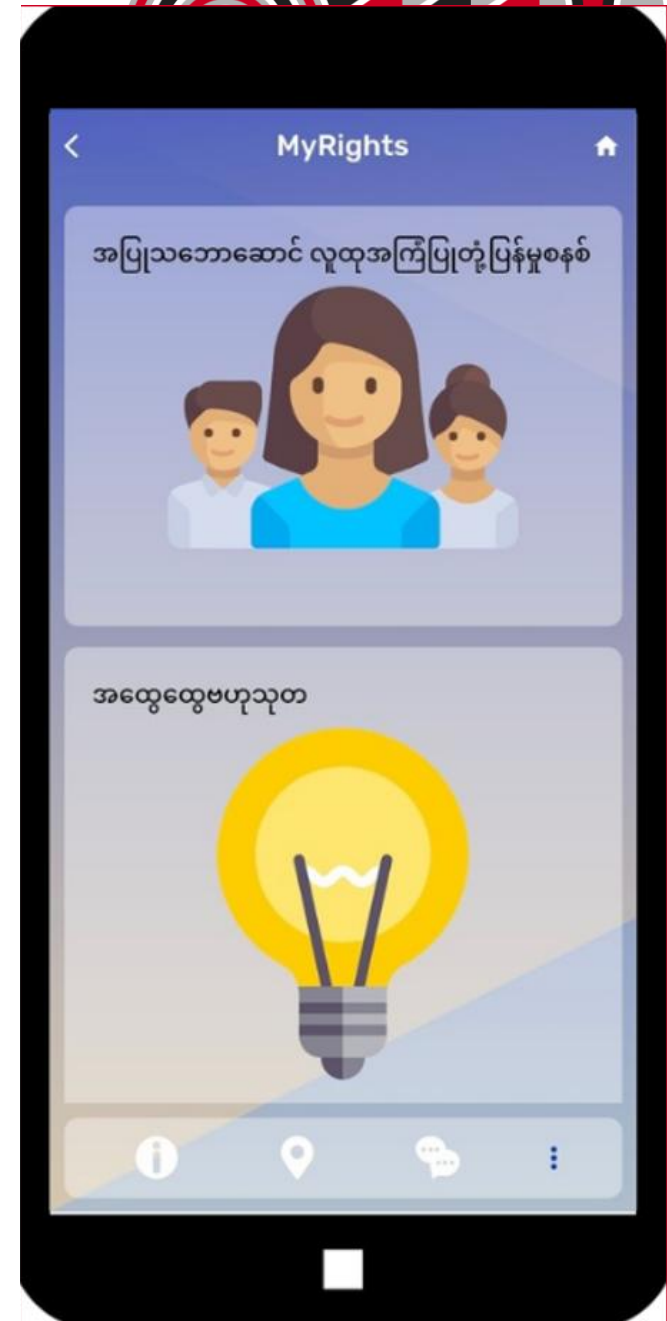
- A **community-led system** launched in 2014 by the Community Network Consortium on HIV (CNC), made up of 8 national networks.
- Developed to **document and respond to discrimination**, rights violations, and service gaps experienced by PLHIV and key populations.
- Focuses on **health, legal, workplace, and social issues** that affect access to care and justice.
- Promotes **equity, dignity, and accountability** by ensuring the voices of affected communities are heard and addressed.



IAS 2025

# How It Works: CFM in Practice

- **Feedback submitted** via the **MyRights** App — by peers trained to collect and report cases from the ground.
- **Local CFM Committees** (supported by the National AIDS Program) verify and respond to cases.
- Support offered includes:
  - Legal aid
  - Emergency assistance (e.g., food, transport)
  - Counseling and mediation
- CFM is currently active in **six townships**, led by PPSSM (a member of the CNC), reaching highly vulnerable groups.





IAS 2025

# Myanmar's HIV Crisis: Who Is Most Affected?

Estimated 283,000 people living with HIV in Myanmar

Majority of new infections among key populations:

- People who inject drugs (PWID)
- Gay men and other men who have sex with men (MSM) and transgender people (TG)
- Female sex workers (FSW)

Stigma and barriers limit access to health and social services



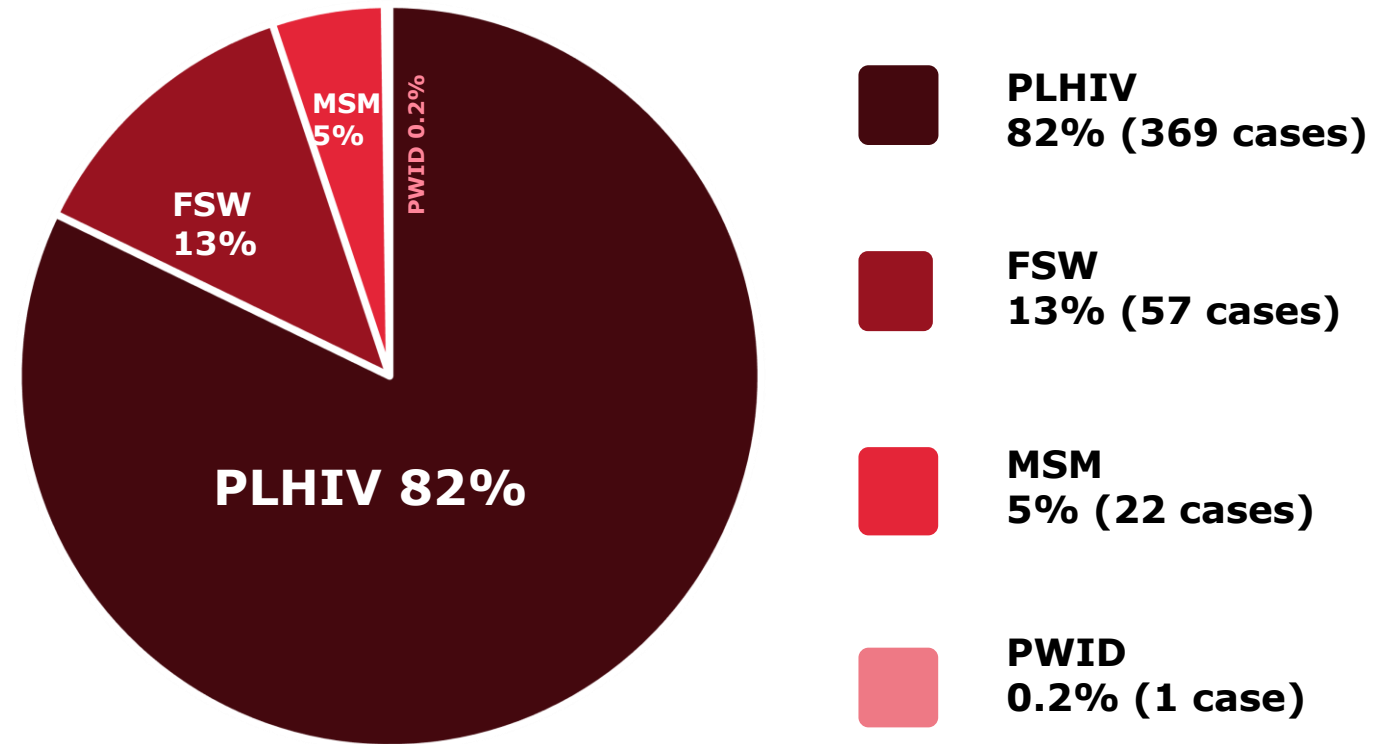


IAS 2025

# Who's Most Affected by HIV in Myanmar?

## What the Data Shows Us

- 82% of reported cases came from people living with HIV (PLHIV)
- Female sex workers (FSW) and Men who have Sex with Men (MSM) make up most of the remaining cases
- Data highlights urgent need for inclusive, community-led support systems



Key Population Classification (n=449)



IAS 2025

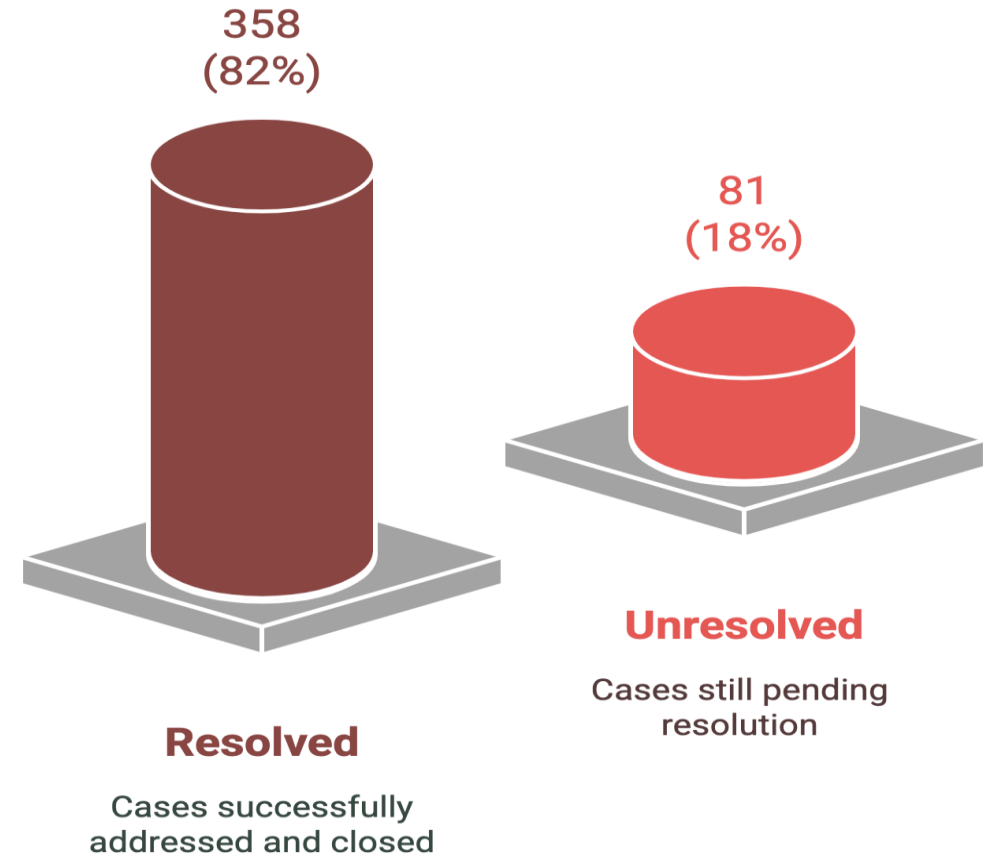
# Resolution Outcomes of Valid Cases

439 valid cases

- **Resolved:** 358 (82%)
- **Unresolved:** 81 (18%)

The CFM achieved a high resolution rate — 82% of all valid cases received timely support, legal assistance, or referrals.

## Resolution Status of Valid Cases (n=439)



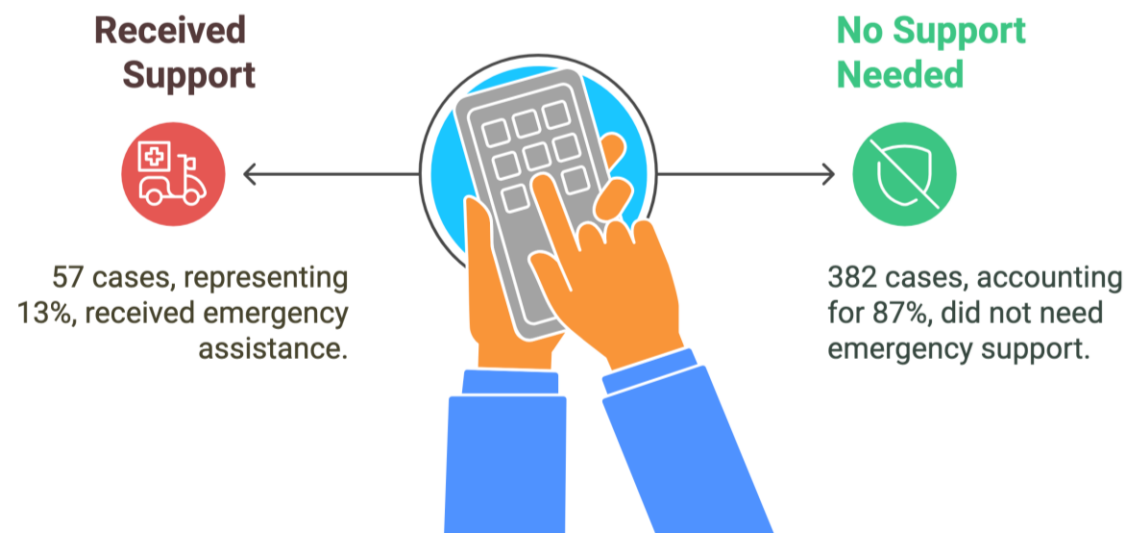
# Emergency Support Reached the Most Vulnerable



- **57 cases** (13%) received emergency support
- **382 cases** (87%) did not require emergency support

While only a minority required emergency assistance, those 13% reflect highly vulnerable individuals for whom timely intervention was critical.

## Emergency Support Reached





IAS 2025

# Barriers Beyond Healthcare

- 82% of reported issues are social, not medical
- Legal, workplace, and justice challenges remain
- Discrimination limits access to care and rights

# How the Community Feedback Mechanism Works

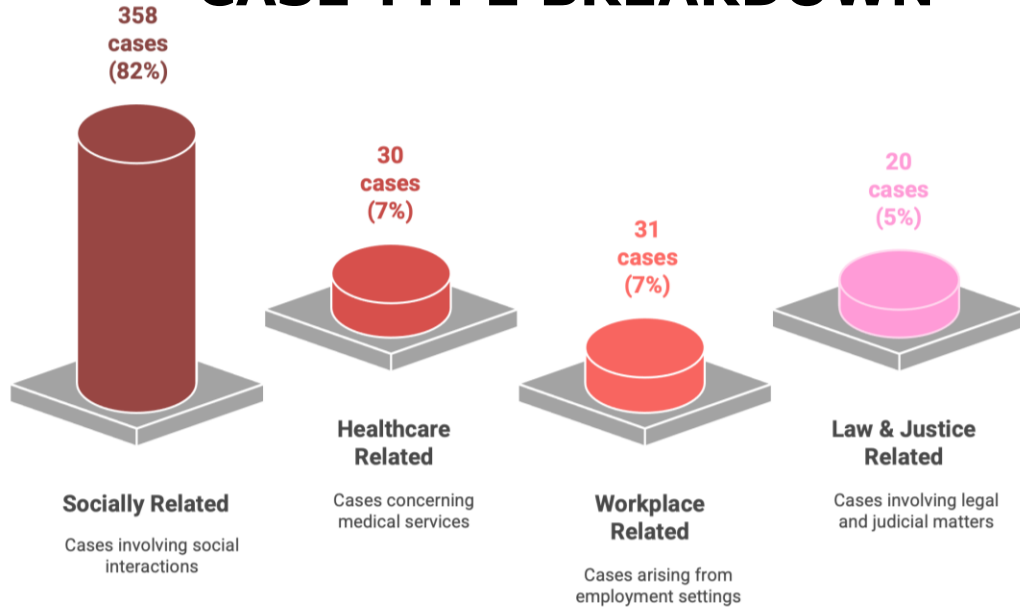
- Cases reported through **MyRights** app by trained peers
- Local committees verify and respond to feedback
- Support includes legal aid, counseling, and emergency help





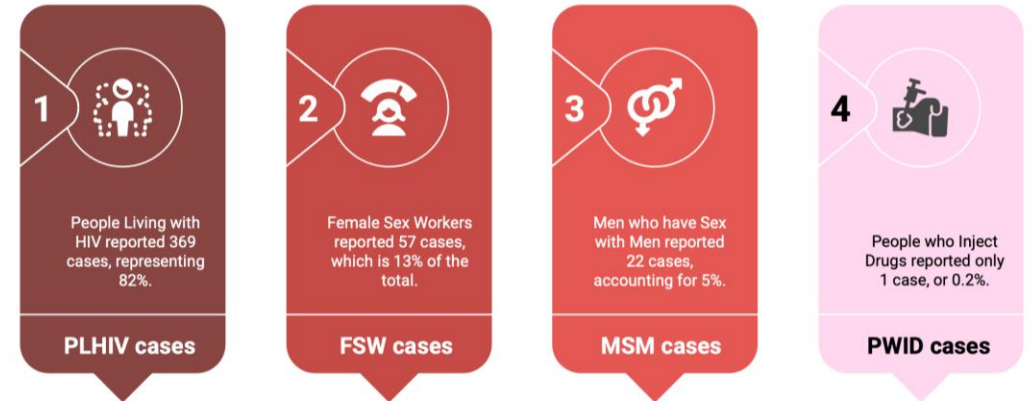
# What Did We Hear? Who Came Forward?

## CASE TYPE BREAKDOWN



***“Most reports were related to social issues, followed by workplace and healthcare access.”***

## KEY POPULATION BREAKDOWN



***“PLHIV made up the overwhelming majority of users, showing strong community engagement.”***



# Lessons Learned: Power of Community-Led Action

## Building Community Success



### Accessibility

CFM is highly accessible to all community members.



### Helpful Guidance

Provides clear and helpful guidance to users.



### Strong Networks

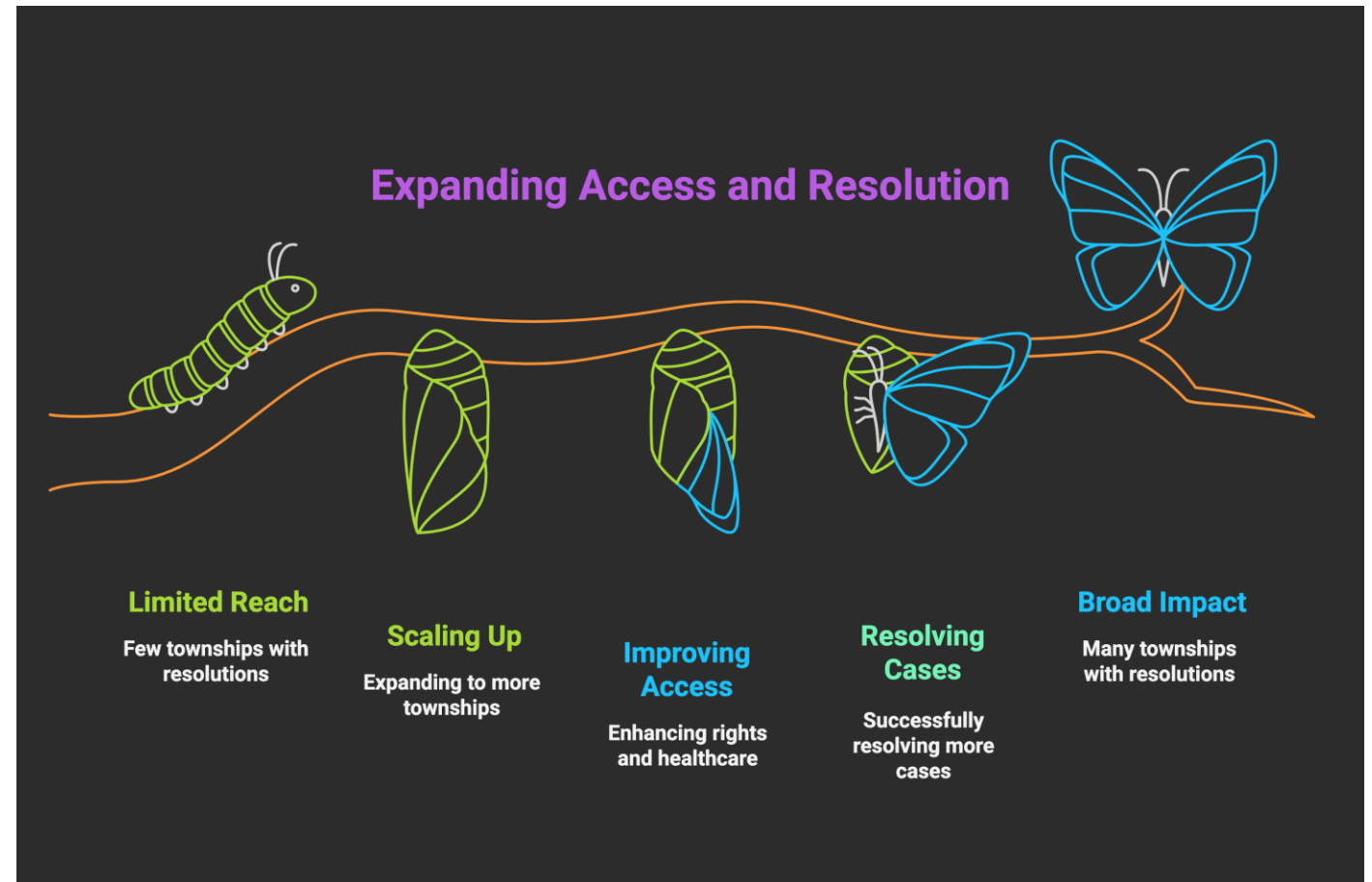
Strong networks ensure quick and effective responses.

Successful  
Community  
System

- CFM is Myanmar's most successful community system
- Users praise its accessibility and helpful guidance
- Strong networks enable fast, effective responses

# What's Next: Scaling Up and Sustaining Impact

- 82% of cases successfully resolved
- Expansion planned from 6 to 16 townships (2024–2026)
- Continuing to improve rights and healthcare access





IAS 2025

# “Community Quote”

“The CFM in Myanmar is vital because it provides a community-driven, accessible, and effective platform for vulnerable populations affected by HIV to voice their concerns, seek resolution for critical issues, and receive essential support”

**Community Member from CFM Project**



# Recommendations



IAS 2025

*“The percentage of emergency support cases (nutrition, transportation) might seem small, these interventions can be life-saving and critical for individuals facing immediate challenges.”*

- Strengthen the CFM’s reach through network expansion to underserved townships.
- Institutionalize CFM learnings into national HIV strategies.
- Provide sustainable funding for emergency support interventions.
- Train local actors to reduce stigma and improve responsiveness.
- Enhance the **MyRights** App with user feedback and multilingual access.



IAS 2025

# Thank You for attention & ... Let's Stay Connected

 **Presenter:** : **Khin Khin Win**, Secretary,  
Puu Paung Swann Saung Myanmar (PPSSM)

 **Email:** : [khinwin.jarnaki@gmail.com](mailto:khinwin.jarnaki@gmail.com)

 **Facebook:** : <http://www.facebook.com/ppssm.mina>



**"COMMUNITY VOICE IS THE FIRST STEP TO EQUITY."**





# ကျေးဇူးတင်ပါတယ်



IAS 2025



THANK YOU

